

DAF LF

How to get the best out of your truck



The DAF LF Series has been designed for optimum efficiency, safety and comfort. The following tips will help you get to know your truck and ensure safe, easy and economic operation.

Contents:

Pre-Trip Information:

- ↻ Entering The Vehicle
- ↻ Getting Comfortable
- ↻ Driver Information Panel (DIP)
- ↻ Daily Checks
- ↻ Engine Start-Up

Driving Systems:

- ↻ Exhaust Brake
- ↻ Cruise Control
- ↻ Personal Speed Limiter Settings

Driving Hints & Tips

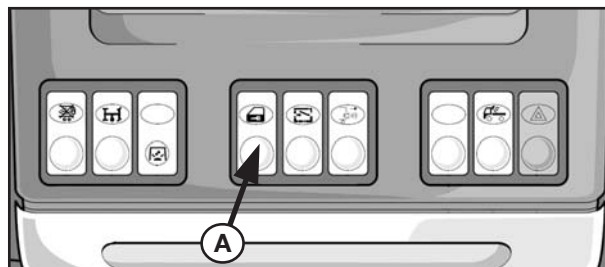
- ↻ Driving for Economy
- ↻ Effortless Driving

LF/0706/1000k

Entering The Vehicle

There are two types of door lock controls available - by key or remote central locking by a hand-held transmitter.

- ➔ For security, the passenger door is not unlocked. To unlock the passenger door, either use the key in the passenger door or press button (A) on the central dash panel

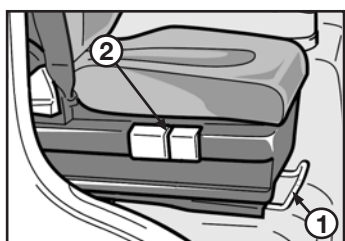


NOTE: Using the remote locks the passenger door BUT does not unlock it.

Seat and Squab Adjustment

The driver's seat has adjustment for backrest angle, seat position, height and angle

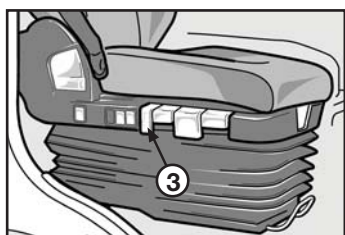
- ➔ Seat height and angle adjustment by operating the levers on the side of the seat (2)
- ➔ Lift lever (1) to adjust forward/back position of the whole seat



Driver's Air Seat (where fitted) - Entry/Exit

The button on the seat (3) allows easy entry and exit from the cab.

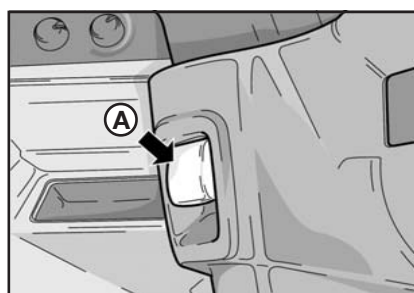
- ➔ On exit from the cab, pushing the button down will drop the seat to its lowest position
- ➔ Pulling the button up will reset the seat to the last seat height position



Steering Column Adjustment

The steering wheel can be adjusted for height and reach.

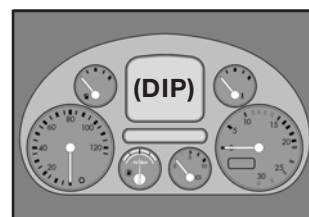
- ➔ To adjust the position, pull the lever (A). This unlocks the steering column for adjustment. Release to lock the column



Driver Information Panel (DIP)

The Driver Information Panel provides information about vital vehicle and engine functions and is part of the central warning system. When the ignition is turned on, the following warning signals will be displayed:

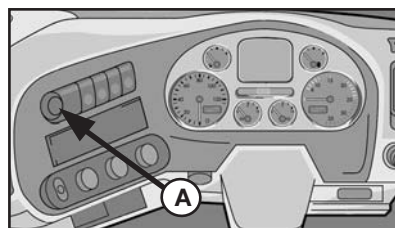
- ➔ Oil pressure - red
- ➔ Alternator voltage - red
- ➔ Steering Circuit 1 - red
- ➔ ABS Prime Mover - yellow
- ➔ ABS Drawn Vehicle - yellow
- ➔ AIRBAG -yellow



If a fault is detected then a warning will be displayed:

- ➔ A red 'STOP' warning indicates a serious fault and the vehicle must be stopped safely and the engine switched off
- ➔ A yellow indicator is less serious but should be investigated at the earliest opportunity

To access further information, press button (A) to activate the DIP. Turning the button left or right will scroll through each feature on the menu. Press button (A) a second time to execute the menu item.



The DIP provides the following information:

- ➔ Vehicle Info
- ➔ Faults
- ➔ Trip Info
- ➔ Settings

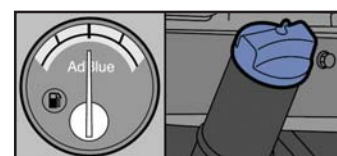
Fluid Level Checks

All critical fluid levels are located under the front grille.

- ➔ Engine oil level - dipstick
- ➔ Coolant level - to the black cap
- ➔ Clutch fluid - marked 'min' & 'max'
- ➔ Screenwash

AdBlue

There is an AdBlue level gauge in the main dash. A warning will also be displayed in the DIP if the tank level drops to a minimum level.



Engine Start-up

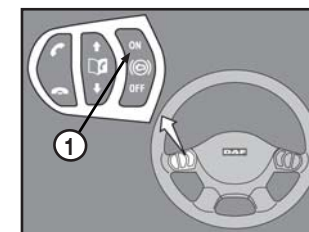
The engine management system automatically controls the amount of fuel and 'intake air heating' required.

- ➔ When you start the engine do not touch the throttle pedal

Exhaust Brake

Using the Exhaust Brake increases service brake life and saves fuel.

- ➔ Press the button (1) on the left hand steering wheel switch to the 'ON' position and release. The Exhaust brake will operate every time you take your foot away from the throttle pedal. To turn off the system press 'OFF'.



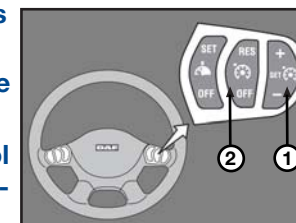
The Exhaust braking system works most effectively when the engine revs are in the blue section of the rev counter.

- ➔ With a manual gearbox, change gear to ensure the engine speed stays in this range

Cruise Control

To set the cruise control, ensure that the vehicle is running at the required speed and in excess of 36 km/h.

- ➔ Press 'SET + or -' (1) Cruise is now set
- ➔ Press '+' or '-' (1) to increase or decrease the set speed
- ➔ Resuming the cruise control to the last setting by pressing 'RES' (2)



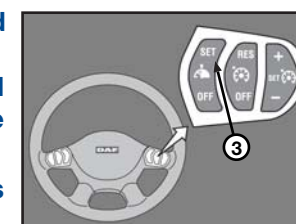
When the cruise speed is set, a speedo icon and the speed are displayed on the Driver Information Panel.

- ➔ To manually deactivate cruise control, press 'OFF' (2)
- ➔ By operating the clutch or service brake
- ➔ If the variable personal speed limiter is activated

Cruise control will also be deactivated:

Personal Speed Limiter

- ➔ Adjust the vehicle's speed to the limit required
- ➔ Press 'SET' (3). The speed limit will be indicated on the DIP
- ➔ To cancel the limiter, press 'OFF' (3)



Driving for Economy

To obtain the best fuel consumption, combined with the optimum performance, LF engines need to be operated within the green band.

- ➔ Always pull away in 1st gear
- ➔ LF engines develop maximum pulling power at low revs - don't drive by 'ear', watch the rev counter and keep the engine inside the green zone

NOTE: Don't allow the engine to over-rev into the red section. This can result in extra powertrain wear and possibly engine damage

Effortless Driving

Using the driving features wherever and whenever possible will help you have an easier day:

- ➔ Wherever practicable use Cruise Control - It's better for the truck and less effort is required by you.
- ➔ When descending a gradient use the exhaust brake and select the gear to put the engine in the blue band. Remember this will increase the brake life and save fuel as the fuel is cut every time the exhaust brake is engaged.
- ➔ The personal road speed limiter can be useful when driving in urban areas with speed restrictions which means the driver can now concentrate on the traffic with the safe knowledge the speed will not be exceeded.

Important

Your DAF LF is also supplied with a comprehensive Driver's Handbook. It is important that you take the time to read your copy and familiarise yourself with your vehicle and the features it offers. Make sure this Driver's Handbook is in the vehicle at all times. Read it carefully before making your first journey, especially the section; 'Warnings and Safety Instructions'