

# Specification sheet



A PACCAR COMPANY

## FA LF45 08t Box body

4x2 rigid

### Engines<sup>1)</sup>

LF45.140; 103 kW  
 LF45.160; 118 kW  
 LF45.180; 136 kW  
 LF45.220; 165 kW

### GVM

7500 kg  
 Max. front<sup>2)</sup>: 3400 kg  
 Max. rear: 5300 kg

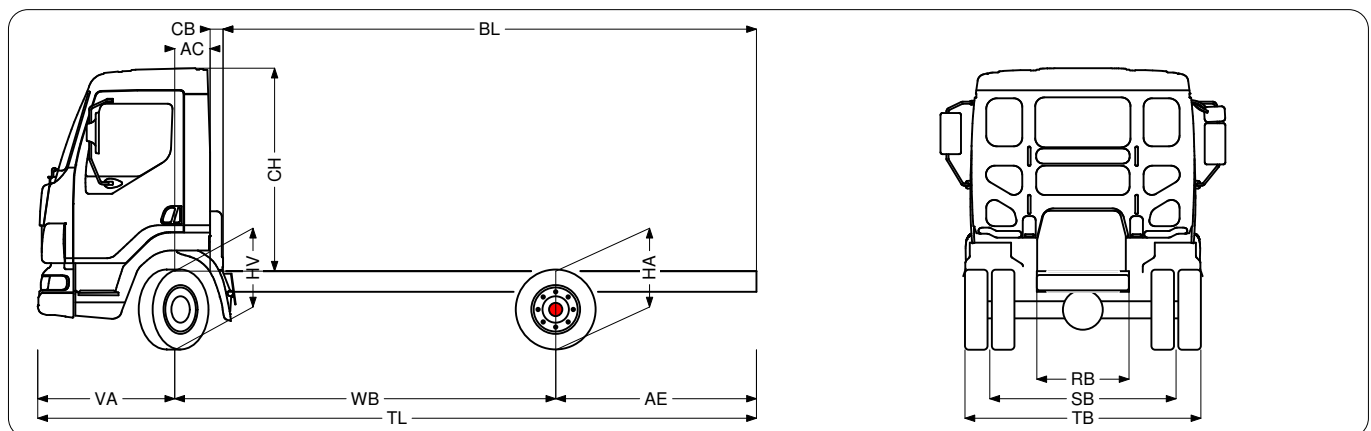
### GCM

11000 kg



Day	Wheelbase - AE <sup>4)</sup>		Unladen weight <sup>3)</sup>			Gross Carrying Capacity			Variable dimensions									
	WB	AE <sup>4)</sup>	Front	Rear	Total	Front	Rear	Total	AC	CB <sup>5)</sup>	CH <sup>6)</sup>	BL <sup>7)</sup>	BL <sup>7)</sup>	TL	HA <sup>8)</sup>	HA <sup>9)</sup>	TK <sup>10)</sup>	TW <sup>11)</sup>
	3,55	1,87	2332	2345	4677	1068	2955	2823	0,33	0,12	1,89	3,50	5,20	6,70	0,82	0,73	11,40	12,96
	3,55	1,87	2332	2345	4677	1068	2955	2823	0,33	0,12	1,89	3,50	5,20	6,70	0,82	0,73	11,40	12,96
	4,65	2,65	2727	2005	4732	673	3295	2768	0,33	0,12	1,89	6,00	6,90	8,57	0,83	0,73	14,09	15,70

Other dimensions VA: 1,27 HV<sup>12)</sup>: 0,77 HV<sup>13)</sup>: 0,71 RB: 0,86 SB: 1,74 TB: 2,20



1) Engines FR103 and FR136 only available as Euro 4 version.  
 2) Axle load with standard tyre size.  
 3) Chassis and Cab Weight calculated with: Standard specification items only with 123 litres of fuel, 15 litres of AdBlue and driver of 80 kg, tolerance ± 3%. Changing of the specification can have major impact on vehicle weight.  
 4) Other AE dimensions may be available for shown WB. Modify rear overhang to the calculated body length.  
 5) CB is based on standard air intake and/or exhaust and/or engine.  
 6) Cab height is measured from frame member to closed cabin roof hatch.  
 7) Calculate customer specific body length with TOPEC. Body lengths shown based on evenly distributed load at max axle load.  
 8) Unladen height at centre of driven axle(s).  
 9) Laden height at centre of driven axle(s).  
 10) TK = turning circle between kerbs.  
 11) TW = turning circle between walls.  
 12) Unladen height at centre of front axle(s).  
 13) Laden height at centre of front axle(s).

TOPEC III V6.6 200813a (374)

# FA LF45 08t Box body

## Cab exterior

Day Cab with rubber suspension at front and mechanical suspension at rear. Steel bumper, tinted glass and electric window openers. Main mirrors and wide angle mirrors electrically heated. Cab width 2130 mm; Green tinted glass; Side no glass / rear single glass; Mechanical door locks, 2 keys; Anti-theft system, engine immobiliser; External sun visor prepared; 5 mirrors; No front view mirror; Mirror brackets, body 2.50-2.60 m.

Optional:

- Cab suspension mechanical
- Cab suspension mechanical reinforced
- Electric door locks with remote control, 2 keys
- Electric door locks with remote control, 3 keys
- Mechanical door locks, 3 keys
- 6 mirrors
- Electrically adjustable mirrors
- Combi lights in bumper

## Aerodynamics

Corner air deflectors.

Optional:

- Various types of roofspoilers and settings

## Colours

Cab colour H3279 Brilliant White; C4P500GRY Chassis colour grey.

Optional:

- Various cab and chassis colours see colour guide

## Cab interior

Right-hand drive (RHD); Mechanically adjustable steering column; Scale speedometer km/h + m/h; Tachograph digital, Siemens/VDO; Speed limiter setting 85 km/h; Driver seat: fixed; Co-driver seat: fixed; Storage box on engine tunnel.

Optional:

- Air bag
- Soft grip steering wheel, leather finish
- Pneumatically adjustable steering column
- Roof hatch, manual control
- Air conditioning
- Various types of drivers and co-drivers seats

## Communication and driver support

Optional:

- FMS connector prepared
- Various makes and types of audio equipment
- Handsfree telephone kit
- Reverse warning

## Suspension and axles

Front axle type F36. Parabolic leaf suspension with shock absorbers and stabiliser. Max. load 3.4 tonnes; Single reduction driven rear axle type SR 5.10 with parabolic leaf suspension, including shock absorbers and stabiliser. Max. load 5.25 tonnes.

Optional:

- Front axle load 3.20 t
- Front axle load 3.60 t
- Rear springs air
- Rear springs parabolic, Heavy Duty

## Wheels and tyres

First front axle: tyre size 215/75R17.5, wheel size 17.5 x 6.75; First rear axle: tyre size 215/75R17.5, wheel size 17.5 x 6.00; No spare tyre; Bridgestone; Wheel colour: silvergrey; Wheel protection rings silvergrey.

## Driveline

Engine type FR103: 4.5 litres 4 cylinders in line, four valves per cylinder, common rail injection system. Performance according to ECE R24-03: output 103 kW (140 hp) from 1900 rpm on, torque 550 Nm at 1200-1700 rpm. Exhaust emission aftertreatment with SCR technology (selective catalytic reduction); Manual gearbox, 5 speeds; Gearbox ratio 4.65-0.77; Rear axle ratio 4.10.

Optional:

- Mechanical differential lock
- ASR

## Brake system

Exhaust brake; Dual circuit full air brake system with ventilated discs front and rear. Air compressor with heated air dryer, 330 l/min at 8 bar. Rear axle load sensing valve.

## Chassis

Wheelbase 3.55 m / rear overhang 1.87 m; Side member height 192 mm; Exhaust discharge to the middle; Fuel tank 1x123 litres; For available heights, thickness and inner reinforcements see chassis drawings.

Optional:

- Exhaust discharge to the left-hand side
- Fuel tank 1x168 litres
- Fuel tank 1x200 litres
- Fuel tanks 1x123+1x123 litres
- Spare wheel carrier side
- Spray suppression
- Front underrun protection (FUP)

## Drawbar and trailer equipment

Closing member.

Optional:

- Trailer coupling D= 7
- D-value cross member D= 7
- Electric connection 24 V / 2x7 pins
- Electric trailer connection 12 V

## Bodies and preparations for bodying

Application connector on the cab front; Body mounting brackets; Body panel colour white; Body length 5150 mm; Body width 2480 mm; Rear roller shutter door.

Optional:

- Column tail lift
- Tuck-under tail lift

## Power take-off (PTO)

Optional:

- Various types of PTO's / position combinations

## Electrical power supply

Alternator 80 A, batteries 2x 125 Ah.

Optional:

- Alternator 100 A
- Batteries 2x175Ah

## Safety regulations

Optional:

- Main switch with manual control
- Various packages of EC-ADR safety regulations

## Legal aspects

Technical GVM max 7500 kg; Technical GCM max GVM+3500 kg; Exhaust emission Euro 4.

## Application conditions

Solo application; Maximum ambient temperature 38 degrees; Air intake low.

Optional:

- Cold climate, temperatures below minus 18 deg C
- Automatic engine stop, 5 minutes
- Radiator flyscreen

## Vehicle delivery

Standard toolkit.

Depending on the vehicle configuration a specific option may not be possible. The availability and specification of this vehicle may differ per country. For further information please contact the DAF organisation. Subject to modification without prior notice.